

GC INTERNATIONAL OLYMPIAD FOR ENGLISH LANGUAGE - LEVEL BUDS SAMPLE PAPER

Question 1

Identify the sound of the word shown in the picture.



- A. e e ee B. s s s sa C. Ch ch cha D. A a a

Key: D

Question 2

Find the rhyming word for the picture shown.

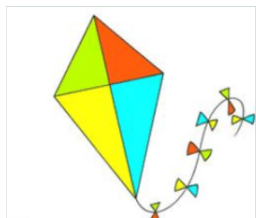


- A. Rat B. Cot C. Mat D. Sit

Key: C

Question 3

Fill in the blank.



K _ T E

- A. E B. A C. U D. I

Key: D

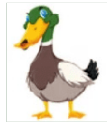
Question 4

Find the incorrect match.

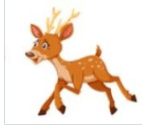
A. C:



B. T:



C. D:



D. None of these

Key: B

Question 5

Find the correct option that matches the given words with the pictures.

I	CAT	a	
II	BAT	b	
III	MAT	c	
IV	SAT	d	

A. I: c

B. II: a

C. III: d

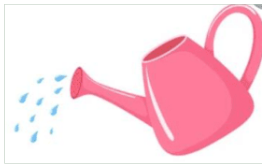
D. IV: b

Key: D

Question 6

Which among these is not a thing.

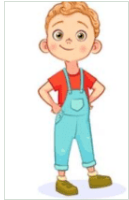
A.



B.



C.



D.



Key: C

Question 7

Fill in the blank with an appropriate WH word.

A: _____ is he?

B: He is my brother.

A. Which

B. Where

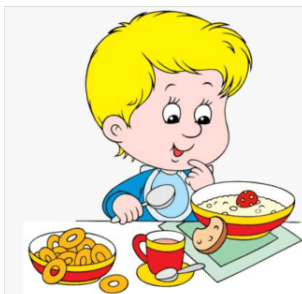
C. Who

D. Why

Key: C

Question 8

Observe the picture and identify an appropriate action word.



A. Walk

B. Eat

C. Sleep

D. Run

Key: B

Question 9

Find the word that sounds same as 'I'.

- A. Ice B. Sea C. Eye D. See

Key: C

Question 10

Look at the letter below. Find the letter that matches it.

Q

- A. b B. f C. e D. q

Key: D

Question 11

Read the sentence below. Then, choose the animal that is named first in the sentence.

Jill has a frog and a fish.



Key: B

Question 12

Find the missing letter

S _ _ S T E R

- A. S B. A C. I D. None of these

Key: C

Question 13

Find the beginning letter.



- A. S B. L C. M D. N

Key: C

Question 14



__ nsect

Find the missing letter.

- A. E B. C C. Y D. I

Key: D

Question 15

Find the beginning sound.



- A. S B. V C. L D. None of these

Key: B

Question 16

Choose the correct word.



- A. Plane B. Plain C. Plian D. Plean

Key: A

Question 17

Find the rhyming word.

Ball

- A. Snake B. Fell C. Sale D. Fall

Key: D

Question 18

He is a _____



- A. Nurse B. Coach C. Chef D. None of these

Key: C

Question 19

Fill in the blank with an appropriate word.

She _____ (hat/sat) in the van.

- A. Sat B. Hat C. Both A and B D. None of these

Key: A

Question 20



The word of the given picture ends with letter 'A'. YES/NO

- A. NO B. YES

Key: A

Question 21

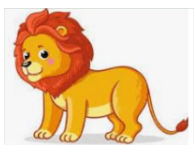


Find an appropriate word for the given picture.

- A. Sit B. Eat C. Nap D. Read

Key: C

Question 22



is a _____ (Verb/Noun)

- A. Verb B. Noun

Key: B

Question 23

What is the plural of **Pencil**.

- A. Pencils B. Pencil C. Pencilss D. Pencilses

Key: A

Question 24

Rewrite the letters to make a meaningful word.

*Write the answer in capital letters only

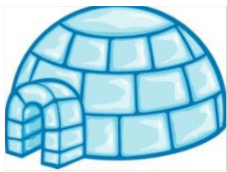


Key: JAM

Question 25

Identify the thing that starts with letter 'I'.

A.



B.



C.



D. All of these

Key: A

Question 26

Write the correct spelling for the given picture.

*Type the answer in capital letters only



Key: STRAWBERRY

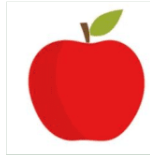
Question 27

Find the action verb among the following.

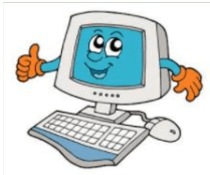
A.



B.



C.



D.



Key: D

Question 28

Pumpkin pumpkin on the ground

How'd you get so big and ?

Read the lines of the poem and fill in the blank with an appropriate rhyming word that completes the sentence with a meaning.

A. born

B. find

C. Jig

D. Round

Key: D

Question 29

Read the comprehension and answer the given question.

Mary and her family went sledding. They each brought their own sled. When they got to the hill, they had a race.

Where did Mary and her family go?

A. Skiing

B. Sledding



Key: B

Question 30

Read the comprehension and answer the given question.

Mary and her family went sledding. They each brought their own sled. When they got to the hill, they had a race.



What did they do when they got to the hill?

- A. Had hot chocolate B. Had a race

Key: B